



**Huntingdon**

August 2017

31/07/2017 to 27/08/2017



REGION - East

Monday to Sunday

COUNT TYPE: Footfall Counts

**Monthly Footfall**

Benchmark calculations (Year on Year and Month on Month) have been calculated using like for like data sets (only those counters available in both comparison periods) to ensure statistical accuracy

	Year to Date % Change		Year on Year % Change		Month on Month % Change	
	2017	2016	2017	2016	2017	2016
Huntingdon	▲ 14.4 %	▼ -6.9 %	▲ 8.1 %	▲ 1.9 %	▲ 1.9 %	▲ 0.0 %
East	▲ 2.4 %	▼ -1.2 %	▼ -0.6 %	▲ 2.3 %	▼ -0.6 %	▼ -1.4 %
UK	▼ -0.5 %	▼ -1.7 %	▼ -2.4 %	▲ 0.9 %	▲ 0.5 %	▲ 0.1 %

**Headlines**

Footfall for the year to date is 14.4% up on the previous year.

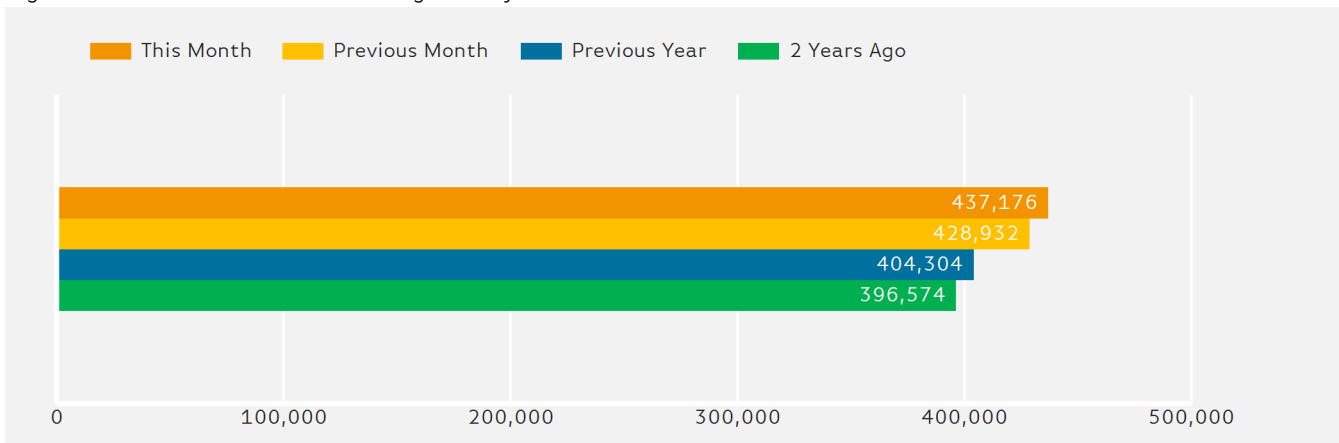
The number of visitors counted for month commencing 31 July 2017 was 437,176.

The busiest day in month commencing 31 July 2017 was Saturday 26 August with 21,812 visitors.

The peak hour of the month was 13:00 on Saturday with footfall of 3,154

**Footfall Totals by Month**

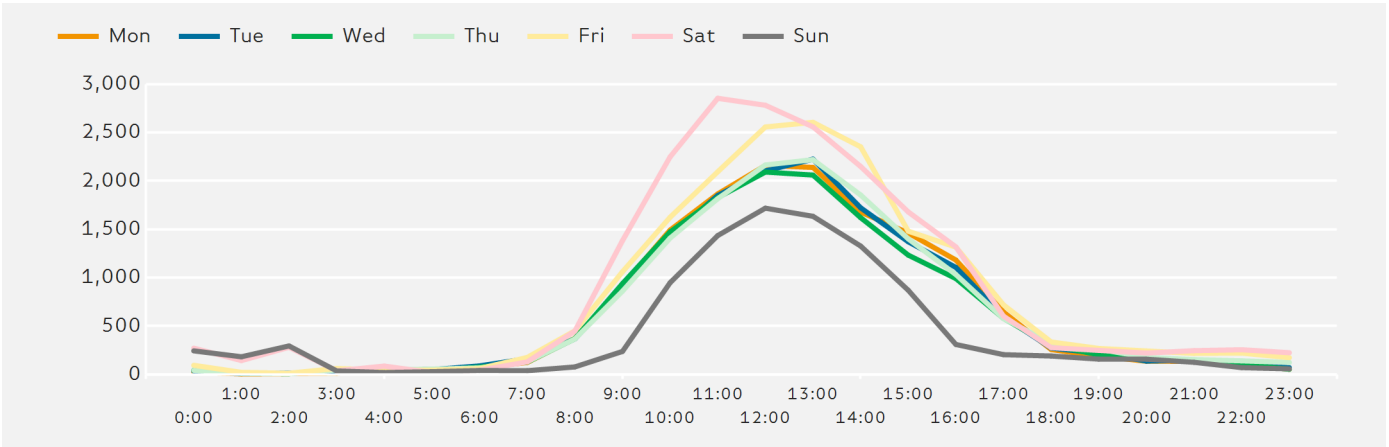
Figures shown below are calculated using monthly totals.



Springboard follows the BRC calendar consisting of complete weeks (Sun- Sat or Mon-Sun) to ensure that the same day is comparable each week. Each month is compiled from a set of full weeks which results in a calendar of a 4 week month, 4 week month, 5 week month pattern.

### Footfall by Hour

The figures shown below are calculated using a weekly average



### Weather



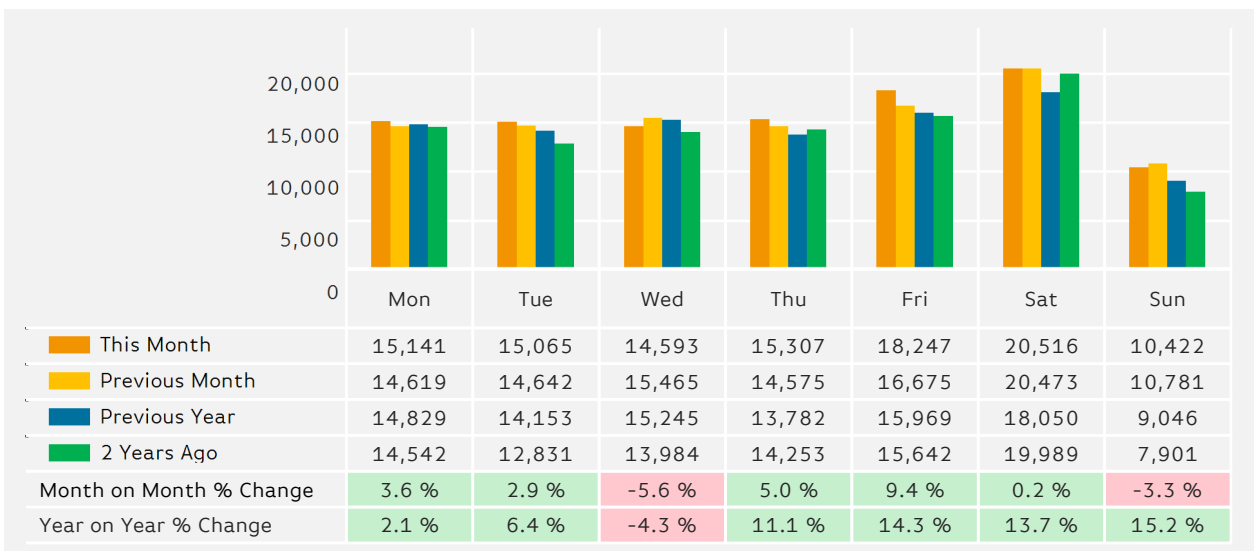
Number of days this month	12	7	9
Number of days same month last year	22	6	

### Average Temperature

Average Temperatures	Maximum Temperature	Minimum Temperature
2017	20.8	12.5
2016	23.5	14.6

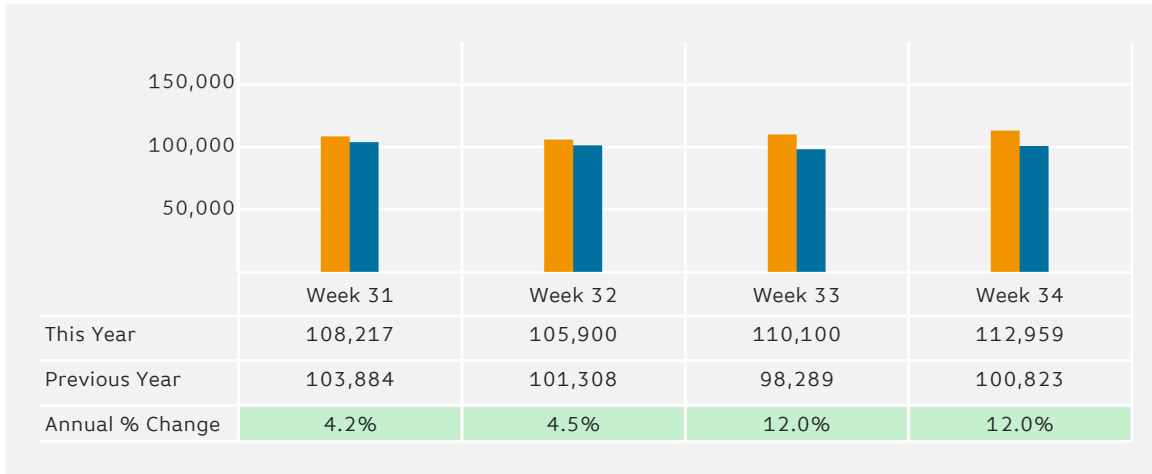
### Footfall by Day

The figures shown below are calculated using weekly averages.



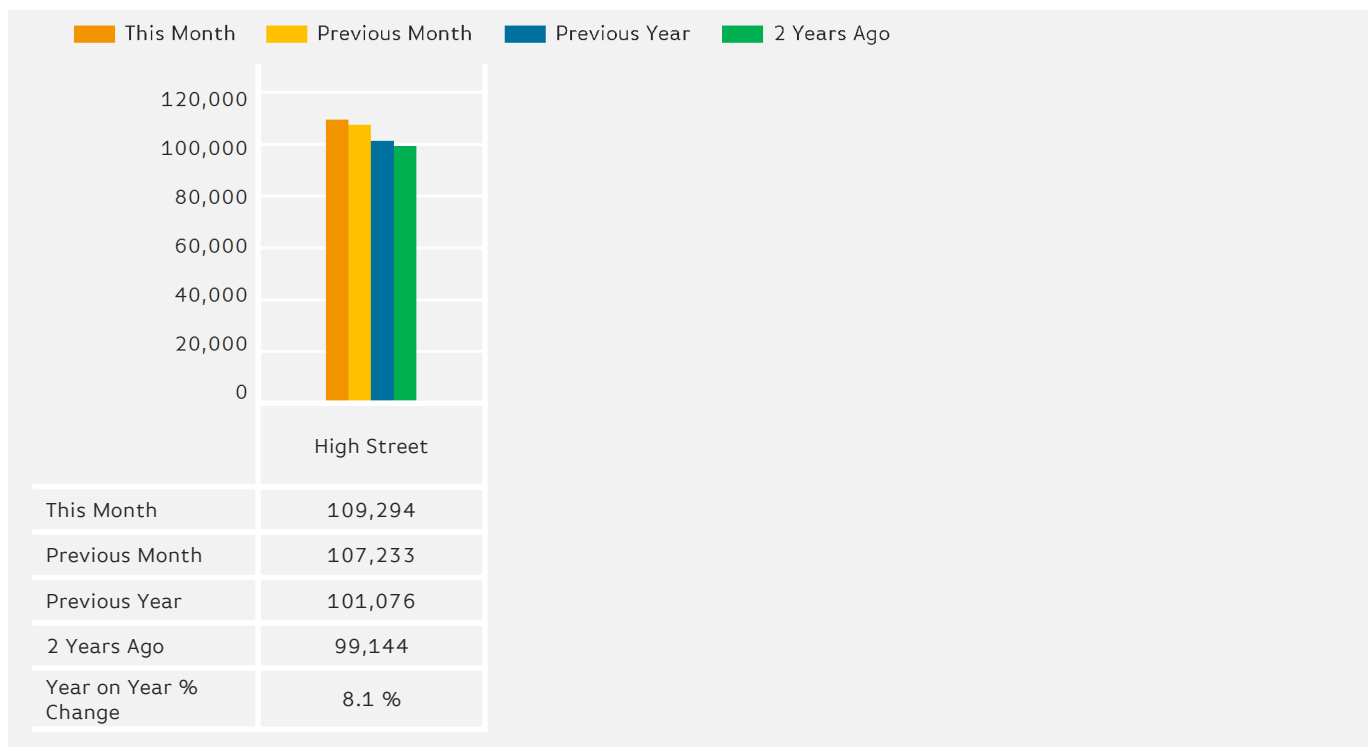
### Footfall by Week of Month

The figures shown below are calculated using weekly totals.



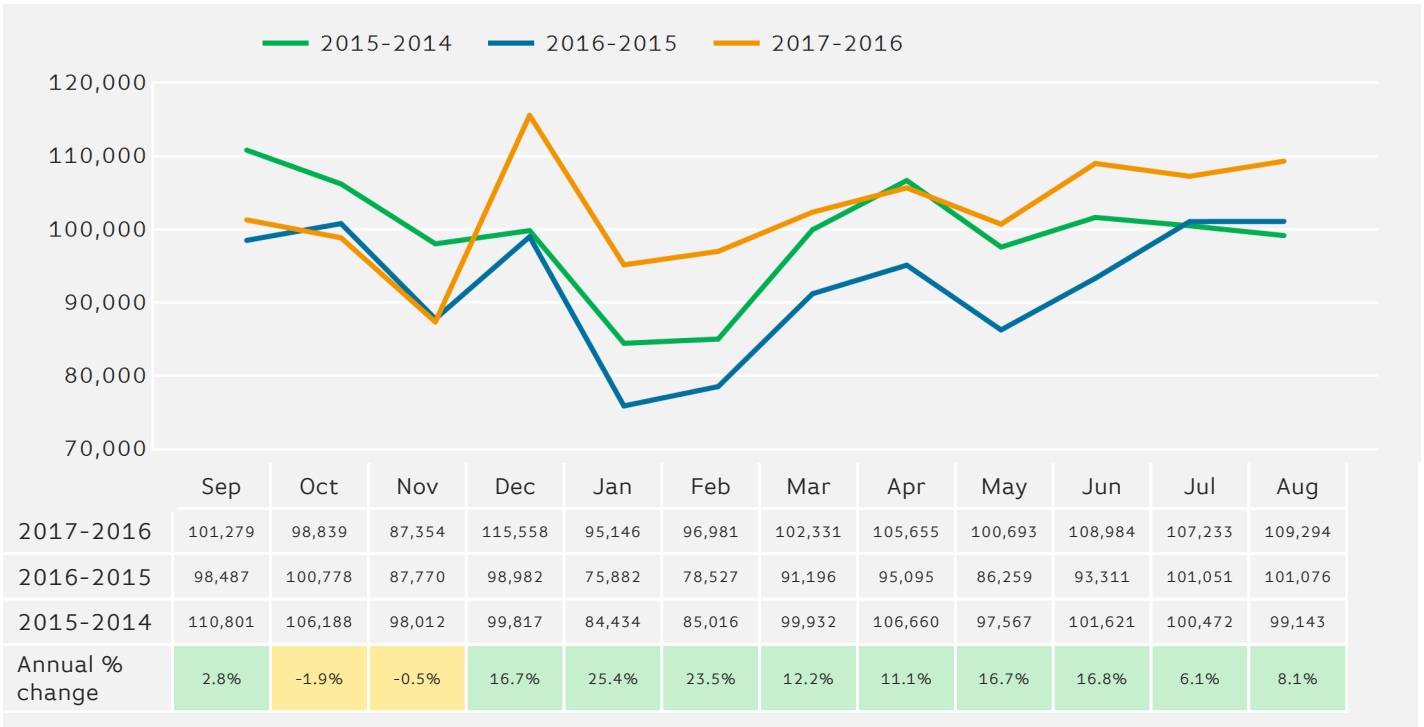
### Footfall by Location

The figures shown below are calculated using weekly averages.



**Footfall - Rolling 12 Months**

The figures shown below are calculated using weekly averages.



Year to Date % Change is the annual % change in footfall from January of this year compared to the same period last year.  
 Year on Year % Change is the % change in footfall for this week compared to the same week in the previous year.  
 Week on Week % Change is the % change in footfall for this week from the previous week.